



### AD100F PANIC EXIT DEVICE

The operating system mechanism concealed within the vertical tubing retracts the latch bolt when the interior actuation bar is pushed. Optionally, an exterior keyed access device can be installed to allow entry. A dogging feature defeats locking action during business hours. Electronic strikes are available for use with our Panic Handles, providing many secured entry options.

### ADDB100F AND ADDBL130F DEADBOLT LOCK

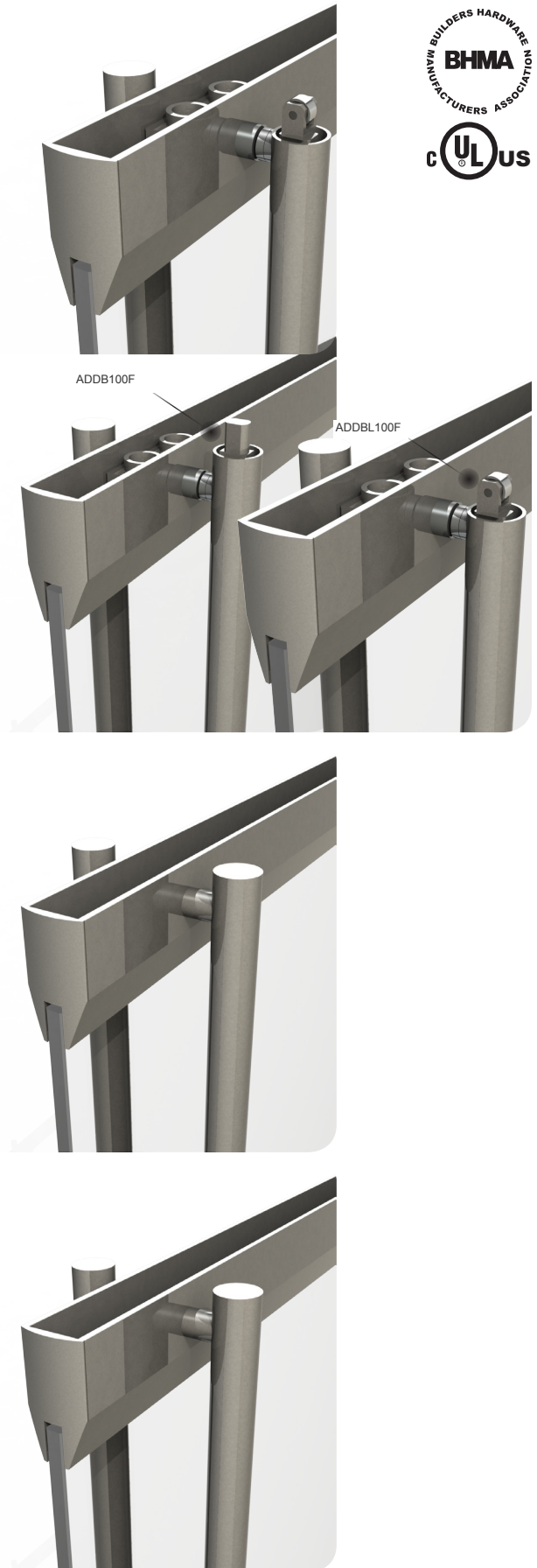
The Deadbolt handle is offered with keyed cylinders on both the interior and exterior sides of the door, or with a thumb turn on the interior. An optional top latch bolt will permit the use of electronic strikes for controlled entry systems part # example = ADDBL100F see illustration

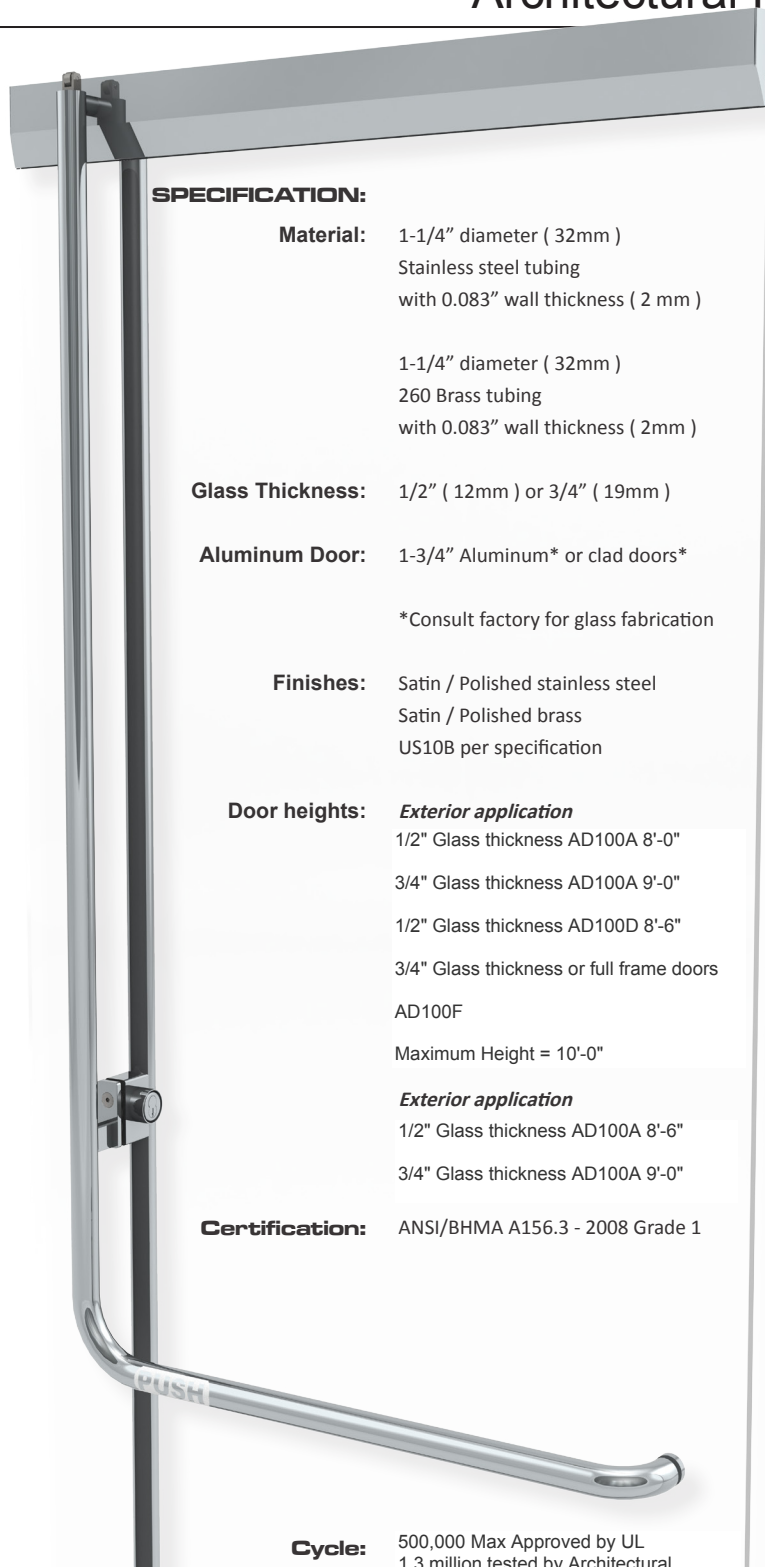
### SMART TOUCH EXIT DEVICE

The touch bar is an electronic exit device that does not require any special tools or knowledge to activate the lock. The simple act of touching the bar/handle (even through gloves or clothing) activates an electronic sensor which immediately releases the lock. No pressure is required for this use which provides superior egress safety for frail or disabled persons.

### ADDH100F DUMMY HANDLE

These fixed handles are designed to match the appearance of Panic, Deadbolt, and Electronic Egress Handles, and are made from the same high quality materials.





## SPECIFICATION:

**Material:** 1-1/4" diameter ( 32mm )  
Stainless steel tubing  
with 0.083" wall thickness ( 2 mm )

1-1/4" diameter ( 32mm )  
260 Brass tubing  
with 0.083" wall thickness ( 2mm )

**Glass Thickness:** 1/2" ( 12mm ) or 3/4" ( 19mm )

**Aluminum Door:** 1-3/4" Aluminum\* or clad doors\*

\*Consult factory for glass fabrication

**Finishes:** Satin / Polished stainless steel  
Satin / Polished brass  
US10B per specification

**Door heights:** *Exterior application*  
1/2" Glass thickness AD100A 8'-0"  
3/4" Glass thickness AD100A 9'-0"  
1/2" Glass thickness AD100D 8'-6"  
3/4" Glass thickness or full frame doors  
AD100F  
Maximum Height = 10'-0"

*Exterior application*  
1/2" Glass thickness AD100A 8'-6"  
3/4" Glass thickness AD100A 9'-0"

**Certification:** ANSI/BHMA A156.3 - 2008 Grade 1

**Cycle:** 500,000 Max Approved by UL  
1.3 million tested by Architectural

AD100 Panic device and ADDB deadbolt  
are all furnished with removable core

Custom collars are available to accommodate  
cylinders with different lengths



## Exception

Maximum height for 1/2' glass doors is 108"  
tall when using "F" style exterior handle

Increased sizes make the door assemblies heavier and more  
flexible.

Therefore, the following guidelines should be considered:

- Wind load, stack action and ventilation loads
- Mounting conditions of doors to building structure
- Panic devices, Deadbolt locks or other hardware

- Overhead closer or floor closer characteristics
- Heavy usage and frequency of operation
- Comfortable feel and ease of door operation

The architect's structural engineer should be consulted to  
assure that the door design is correct to the intended use

The following list of mortise cylinders will work with  
Panics and Deadbolts

MFR.	NO.	NOMINAL LENGTH	CAM NO.
Schlage	20-001	1-1/8"	B502-191
Russwin	#0 1/2"	1-1/8"	#1
Corbin	5253	1-1/8"	#1
Sargent	41	1-1/8"	X13000
Best	1E64	1-1/8"	1EC4
Yale	1152	1-1/8"	1161 (std.)
Lori	218	1-1/8"	4400-00-3002

Removable core mortise cylinders and thumb-turns will function properly when fitted with one of the listed straight cams. Custom cylinder collars are available to accommodate cylinder lengths exceeding 1-1/8"

